



Luther Memorial Church

A YEAR OF

GRATITUDE

STEWARDSHIP 2025



Dear Luther Memorial family and friends,

As we approach the end of the year, we want to take a moment to reflect on the many blessings our church community has experienced. Through your generous support, we have been able to serve our congregation and the surrounding community in profound ways. From outreach programs that provide assistance to those in need, to enriching worship services that uplift our spirits, your contributions have made a significant impact on our mission.

This year, we are seeking your continued support through our general ministry fund. Your financial gift allows us to maintain our facilities, support our ministry programs and reach out to those who are seeking hope and connection. Every gift, no matter the size, helps us to sustain our efforts and expand our outreach. Together, we can ensure that our church remains a vibrant source of faith and support for everyone.

I invite you to consider making a pledge for the coming year. As we move forward, let us embrace the spirit of generosity that binds our community together. Thank you for your unwavering support and commitment to our church family. May God bless you abundantly in all that you do.

As we focus on our work, joining Christ to call every seeking soul, may we treasure and celebrate what makes Luther Memorial a community of inspiration and faith that we share.



In peace,
Mary Jean Huston
Luther Memorial Congregation Council President



A YEAR OF

GRATITUDE

As we celebrated Luther Memorial's centennial during the past year, I often found myself reflecting on the profound sense of gratitude that permeates our community. It's remarkable to witness the ways in which small acts of kindness ripple through our congregation, reminding us of the grace that surrounds us daily. Whether it's the warmth of fellowship during Sunday services, the generosity of those who contribute their time and resources, or the quiet moments of support we offer one another in times of need, I am constantly reminded that gratitude is not just an emotion but a way of life. It calls us to appreciate the blessings we have and encourages us to share that abundance with others, fostering a spirit of love and unity that truly embodies our faith.

In such moments of reflection, I am thankful not only for what we have but for the shared journey of growth and compassion we embark upon together.



In Christ,
Pastor Brad Pohlman

How your gift supports our mission & ministry

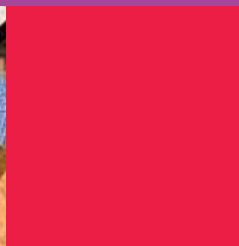
Your gift is crucial to our mission and ministry, providing worship and prayer gatherings, education, music performances and vital outreach into our community and beyond. Financial gifts allow us to steward this beautiful building, a century-old architectural institution in Madison. Your gift enables us to support service organizations, such as The Road Home, Lutheran World Relief, Habitat for Humanity and ELCA disaster relief, which address pressing needs locally and globally. By ensuring that these programs are well-funded, your gifts fulfill our mission of service, care and support for all.

Your gift also fosters a sense of community and belonging among us. When we contribute financially, we feel a deeper connection to this place and its mission. This engagement allows us to participate more fully in the life of the church, weaving the remarkable and vibrant community we experience here.

Your contributions—time, talent and financial—make a tangible difference. Your gift not only sustains our programs but also strengthens the bonds among us, reminding us of the love of Christ and a shared vision of our faith and service.



Bill Hunnex
Luther Memorial Congregation
Council Treasurer



Pledge today!

Please take time to prayerfully consider your support for 2025 and pledge to the General Fund.

Through your pledge, you help sustain all of Luther Memorial's ministries. That means worship, Sunday School, music programs, The Keep Food Pantry, congregational gatherings, youth & family activities, service projects, light bulbs, livestreaming, snow shoveling and more.

And if you've pledged to the General Fund in the past, kindly consider a 3.5% increase for next year.

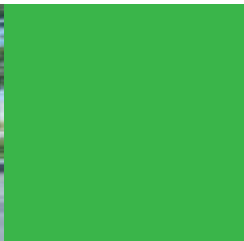
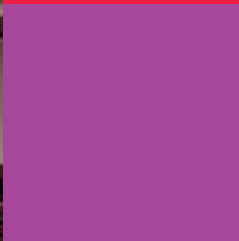
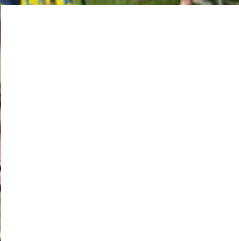
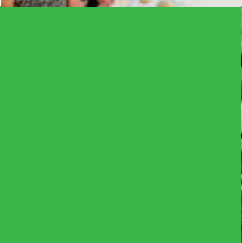
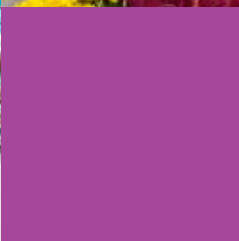
To pledge, simply go online to www.luthermem.org/pledge, or use the enclosed pledge form and return envelope. Extra forms are available at the welcome desk.

Have a question? Contact Suelyn Swiggum, Director of Shared Ministry, at swiggum@luthermem.org or call (608) 258-3160 ext. 15.

Note about Resound, Restore, Rejoice Capital Campaign

We are in the midst of a 3-year capital appeal (July 2024–June 2027), wholly separate from this annual fall appeal for the General Fund. To learn more about the capital appeal, visit www.luthermem.org/pledge, speak with a pastor or contact Suelyn.

Thank you!



A YEAR OF

GRATITUDE

STEWARDSHIP 2025